



GEARTEC AG

WE BUILD GEARBOXES

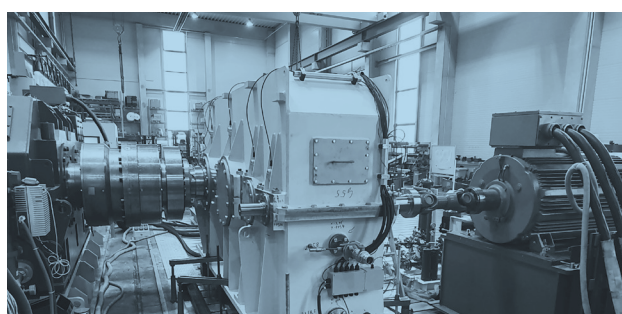
MARINE

CEMENT

MINING

GENERAL
INDUSTRIES

HEAVY AND SPECIAL GEARBOX MANUFACTURING



Design/ development / Re-engineering

Repair / Maintenance

Inspection / Assembly

Test stand (250 / 500 / 1500 kW up
to 653,000 Nm holdback torque)

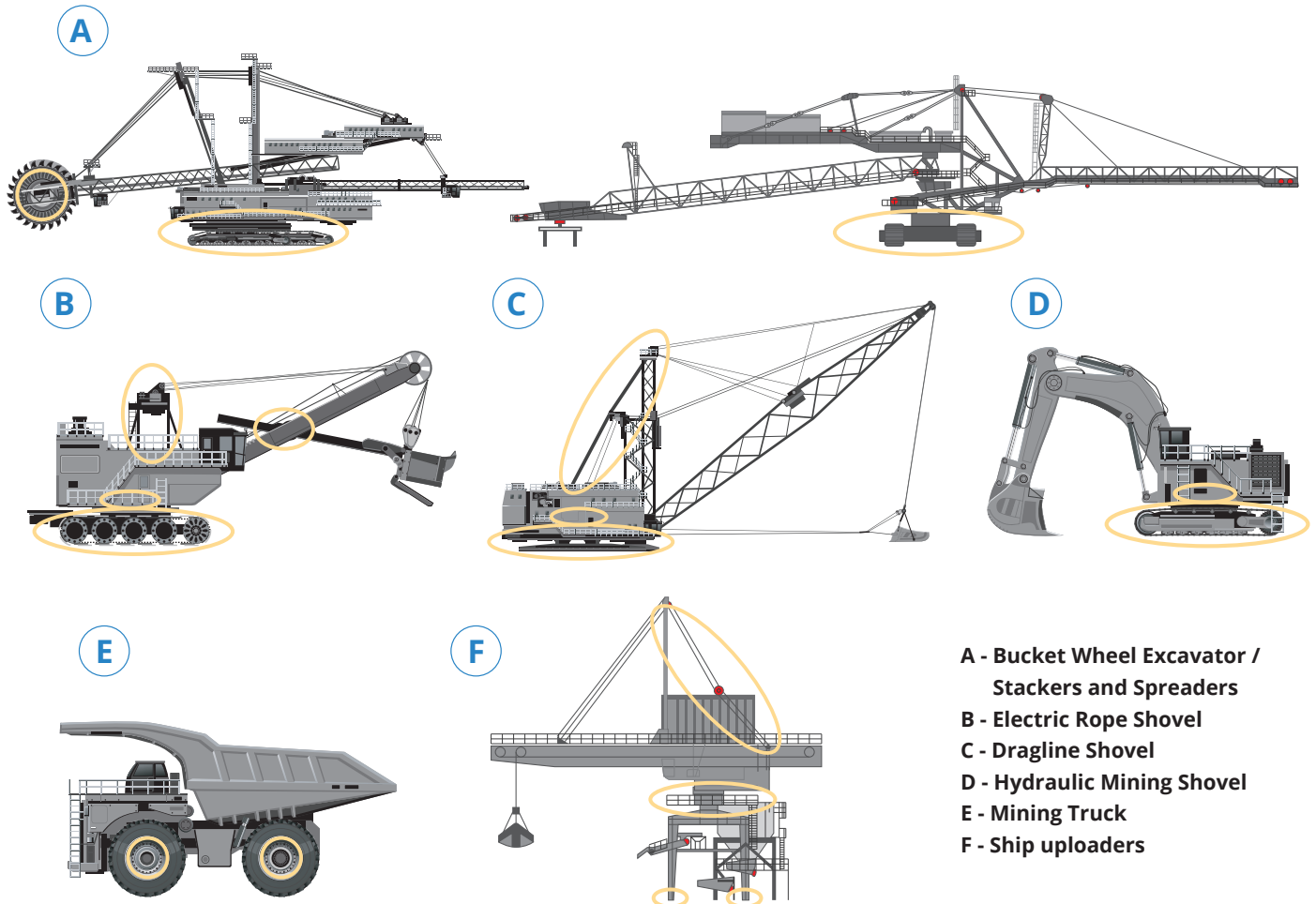
3D-coordinate measurement
(up to 6000x3000x2000 mm)

Condition Monitoring („GearView“)

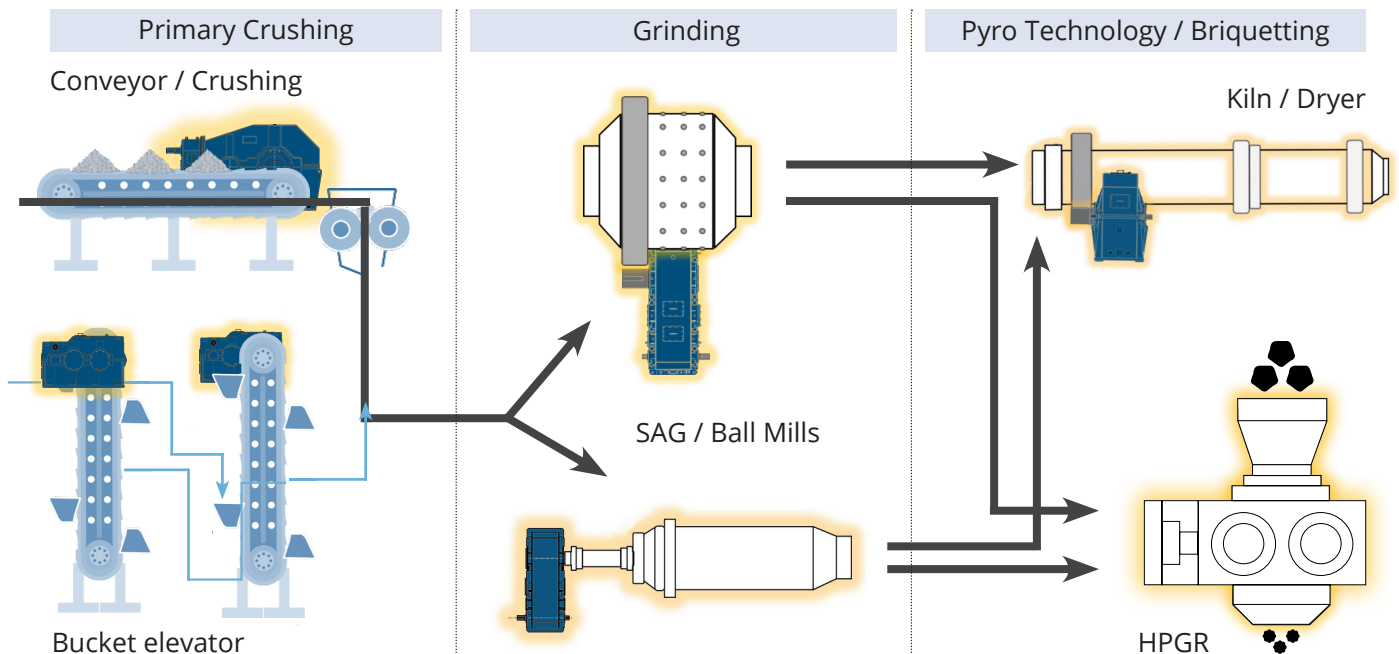
REFERENCES



OPEN PITT / EXTRACTION / HANDLING

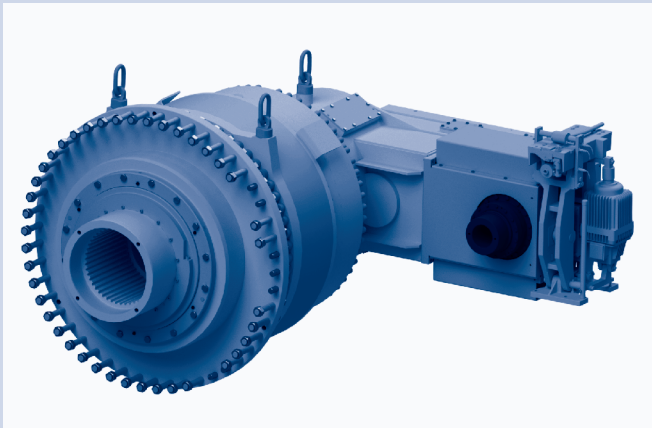


PROCESSING



CRAWLER AND SLEWING GEARBOXES

CRAWLER GEARBOXES



Nominal output torque:
from 100 kNm up to 3,000 kNm

Peak output torque:
from 200 kNm up to 6,000 kNm

Nominal output speed:
from 1 rpm up to 10 rpm

Weight:
from 2 t up to 30 t

Output via:
Flange, hollow shaft with spline or shrink disc Including torque arm, brakes, couplings, monitoring Hydraulic or electric driven

SLEWING GEARBOXES



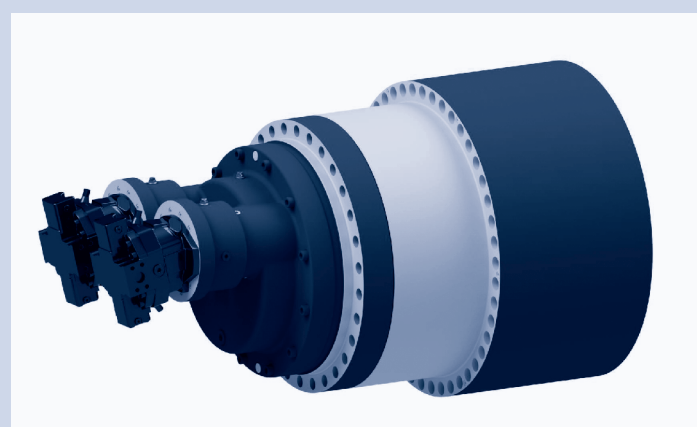
Nominal mechanical power:
from 3 kW up to 120 kW

Output torque:
from 50 kNm up to 500 kNm

Output speed:
0.5 rpm up to 10 rpm

Weight:
from 3 t up to 20 t

WHEEL DRIVE GEARBOXES



Output torque:
from 220 kNm up to 2,200 kNm

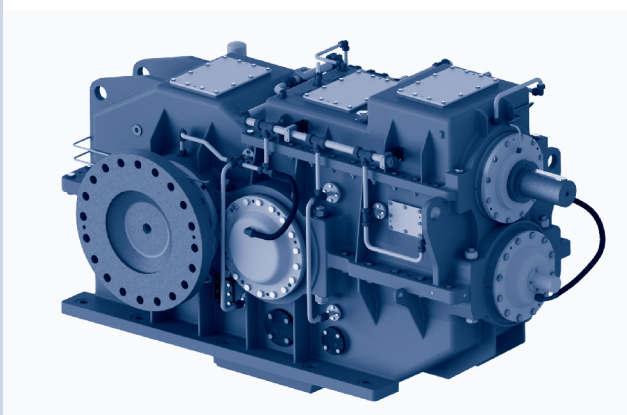
Gearbox ratio:
from 190,4 up to 551,4

Braking torque:
from 1200 Nm up to 2x 2001 Nm

Weight: from 0,7 t up to 10,8 t
All types with integrated parking brake

BUCKET WHEEL AND CONVEYOR GEARBOXES

CONVEYOR GEARBOXES



Nominal mechanical power:
from 160 kW up to 3,100 kW

Output torque:
from 50 kNm up to 500 kNm

Output speed:
15 rpm up to 250 rpm

Weight:
from 3 t up to 30 t

Other gearbox types and designs can be engineered according to customer requirements and precisely matched to the corresponding application.

BUCKET WHEEL GEARBOXES



Nominal mechanical power:
from 160 kW up to 2,200 kW

Output torque:
from 200 kNm up to 5,500 kNm

Output speed:
from 3 U/min up to 8 U/min

Weight:
from 2 t up to 80 t

Output via:
Flange, hollow shaft with spline
or shrink disc

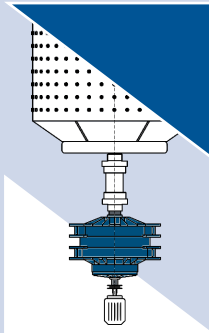
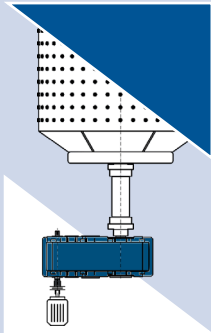
Compact drive:
bevel-spur-planetary gearbox

Differential drive:
bevel-planetary differential-spur
gearbox

Multi motor drive:
2-3 Emotors with 2-3 integrated
differential drivelines

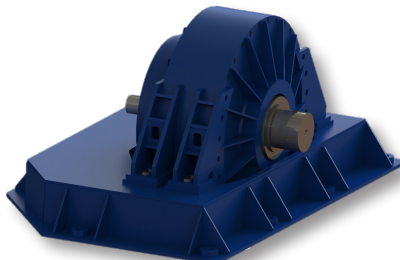
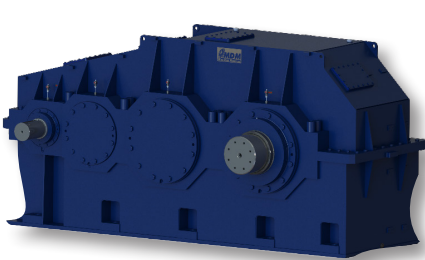
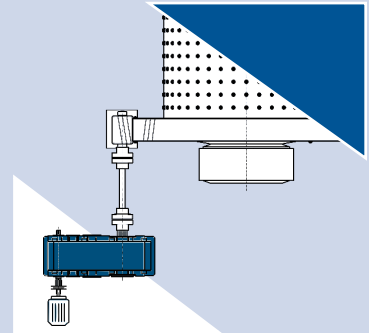
DRIVE FOR BALL MILLS AND SAG-MILLS

CENTRAL DRIVE



GIRTH GEAR DRIVE

(through pinion and girth gear)



GEARBOXES FOR BALL MILLS

Nominal mechanical power:
from 500 kW up to 5,500 kW

Output torque:
from 135 kNm up to 3,600 kNm

Output speed:
14.5 U/min up to 125.3 U/min

Weight:
from 6.5 t up to 100 t

Other gearbox types and designs can be engineered according to customer requirements and precisely matched to the corresponding application.

GEARBOXES FOR SAG-MILLS

Nominal mechanical power:
from 630 kW up to 8,500 kW

Output torque:
from 22 kNm up to 529 kNm

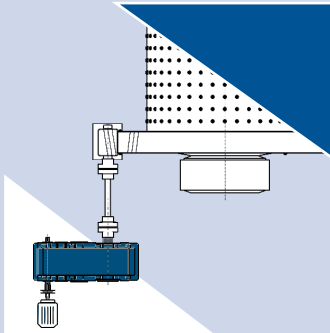
Output speed:
101.3 U/min up to 277.9 U/min

Weight:
from 1.9 t up to 24.1 t

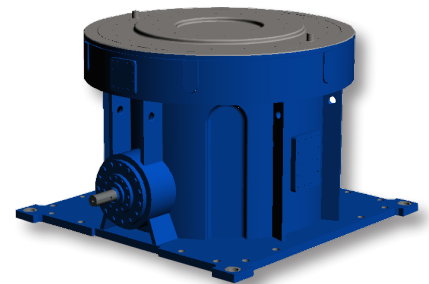
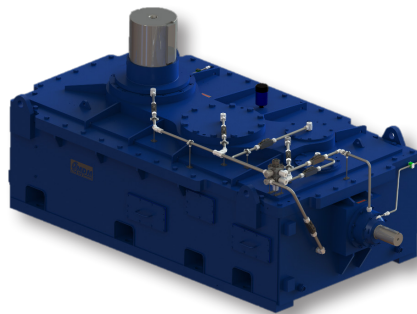
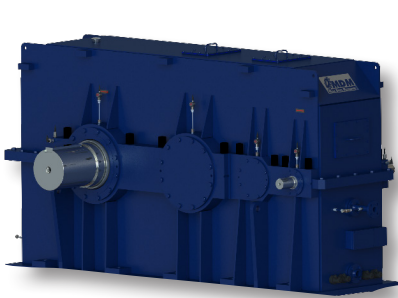
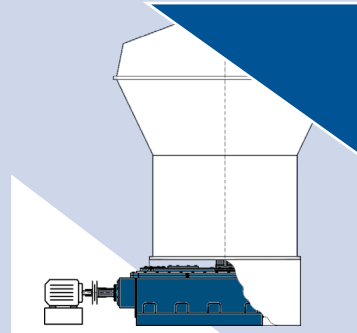
DRIVE FOR ROTARY LINS AND VERTICAL MILLS

GIRTH GEAR DRIVES FOR ROTARY KILNS

(through pinion and girth gear)



VERTICAL MILL DRIVES



GEARBOXES FOR KILN/DRYER

Nominal mechanical power:
from 180 kW up to 1,000 kW

Output torque:
from 83 kNm up to 438 kNm

Output speed:
15.8 U/min up to 125.3 U/min

Weight:
from 8.5 t up to 34.5 t

Other gearbox types and designs can be engineered according to customer requirements and precisely matched to the corresponding application.

GEARBOXES FOR VERTICAL MILLS

Nominal mechanical power:
from 400 kW up to 4,500 kW

Output torque:
from 392 kNm up to 1.750 kNm

Output speed:
9,7 U/min up to 24,5 U/min

Weight:
from 16.5 t up to 120 t



GEARTEC AG
Grabower Straße 6
39126 Magdeburg (Germany)

Telefon: +49 (0) 391 990005-0
E-Mail: info@geartecag.com

www.geartecag.com